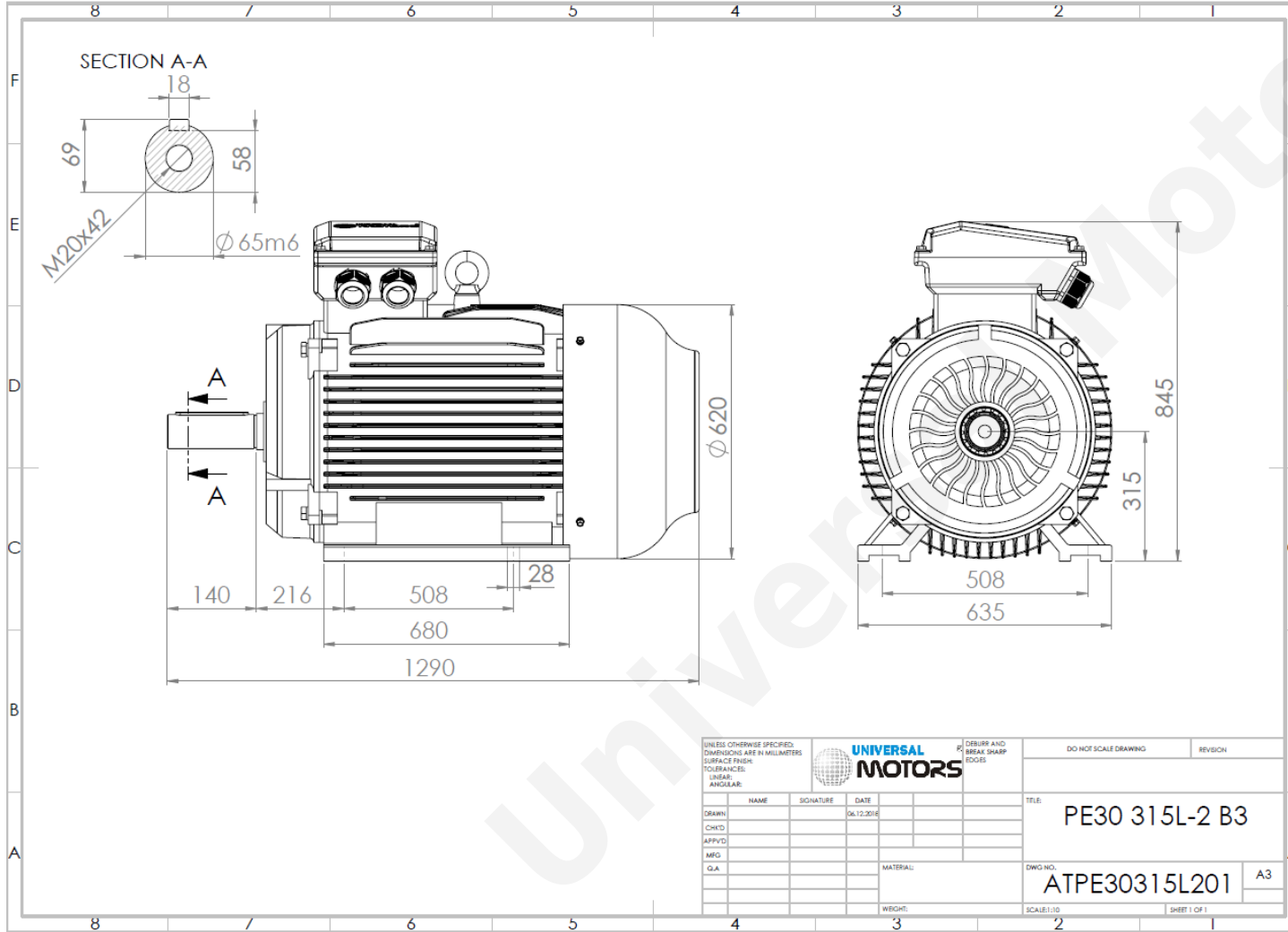




TECHNICAL DATA

Three Phase Electric Motors - Cast Iron Frame
 PE30 315 L1 2 IE3
 160 kW / 220 Cv
 2980 RPM



Motor type:	PE30 315 L1 2 IE3
Output:	160 kW / 220 Cv
Speed (min ⁻¹):	2980 RPM
Frequency:	50 Hz
Voltage:	400 V
Current:	265.0 A
Power factor (Cos Ø):	0.91
Poles:	2
Insulation class:	F
Temperature rise Class:	B
Efficiency 50%:	94.8 %
Efficiency 75%:	95.6 %
Efficiency 100%:	95.7 %
Torque:	513 N.m
Tstarting/Tnominal:	1.8
Istarting/Inominal:	7..2
Tmaximum/Tnominal:	2.3
Noise:	92 Db(A)
Weight:	1050 Kg
Bearing DE:	6317 C3
Bearing NDE:	6317 C3

UNLESS OTHERWISE SPECIFIED, DIMENSIONS ARE IN MILLIMETERS			UNIVERSAL MOTORS		DEBURR AND BREAK SHARP EDGES	DO NOT SCALE DRAWING	REVISION
SURFACE FINISH:							
TOLERANCES:							
LINEAR:							
ANGULAR:							
NAME	SIGNATURE	DATE	TITLE:		PE30 315L-2 B3		
DRAWN		06/12/2016	DWG NO.:		ATPE30315L201		
CHEK			SCALE: 1:10		A3		
APPV'D			SHEET 1 OF 1				
MFG							
Q.A.							
MATERIAL:							
WEIGHT:							

Regime - S1 **Altitude - 1000m** **Environment Temperature - 40°C**

* References applied only in the UK

CONTACTS:
 UNIVERSAL MOTORS Tel: +351 252 299 080
 Rua de São Brás,745 Fax: +351 252 299 089
 4480-782 VILA DO CONDE Mail: geral@universalmotors.pt